



Gphantom Manual Face FB

This manual contains information and instructions about the Gphantom Face FB model.



LEARN. PRATICE. IMPROVE.





Thank you for choosing Gphantom!

We are a company specialized in developing solutions for medical training. Here we will help you handle and optimize the durability of your product. If you are looking for specific models for your training, please contact us.

Your **Gphantom Face FB** is eligible for the Loyalty Program Gphantom.

See conditions.

LEARN. PRATICE. IMPROVE.



Receiving your Gphantom

The Gphantom Face FB was developed to offer a simulation of the human face, with anatomical structures and aesthetic filling materials to assist in the development of facial mapping skills and ultrasound-guided facial aesthetic procedures. This product is indicated for training manual skills, such as holding linear transducers on anatomical structures for facial mapping, facial aesthetic procedures with needles or cannulas guided in real time, puncture or guided biopsy on the face, anatomy of risk areas on the face, in addition to image adjustments and echogenic characteristics of facial aesthetic products (hyaluronic acid, collagen bio-stimulators, support threads, PMMA, silicone oil, among others that you wish to inject and evaluate).



Receiving your Gphantom

The packaging of your Gphantom Face FB contains:

- Model packed in bubble wrap;
- QR code card to access manuals.

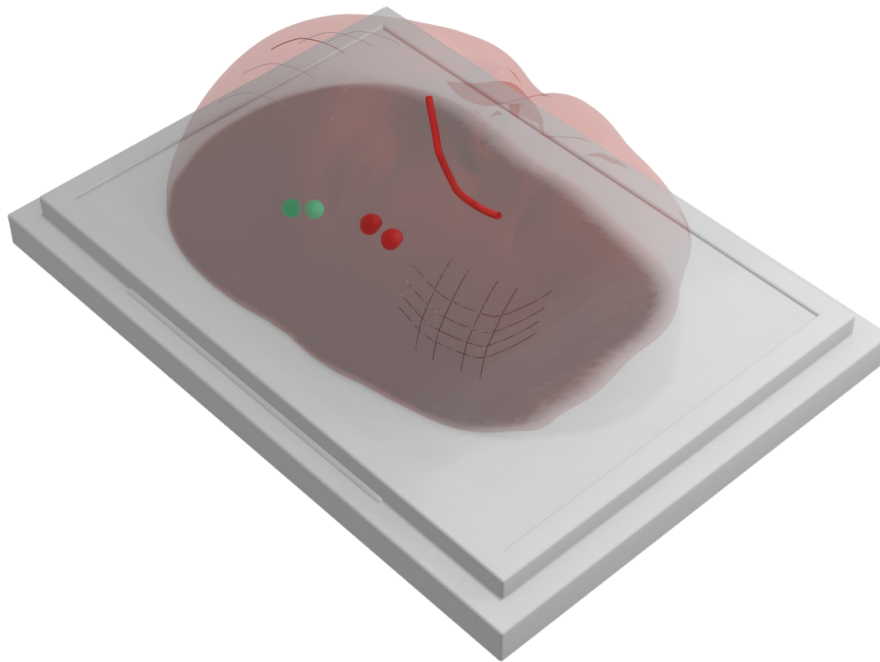
Starting your training

- Remove the model from the packaging, keeping the product on the original base;
- Prepare your ultrasound system and equipment;
- Separate needles and other necessary materials;
- Access our ebook (ebook.gphantom.com.br) to make the most of your training.



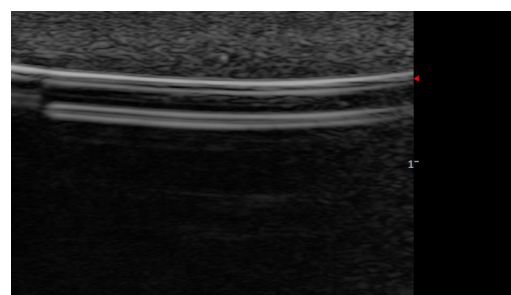
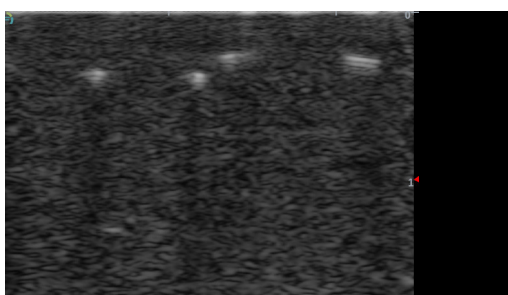
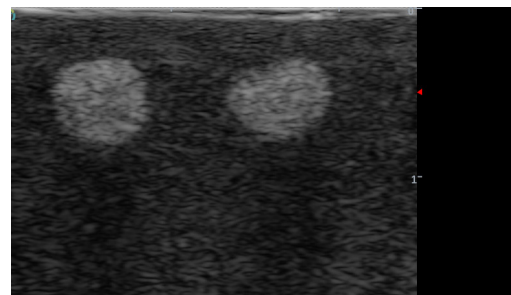
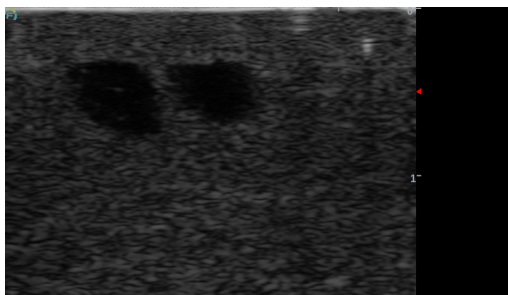


Internal structures



Product code PBD050510
Weight approx. (without packaging) 2 kg
Length 21 cm
Height 14 cm
Width 12 cm

Hyperechoic ●
Nylon Artery ●
Threads ●
Anechoic ●

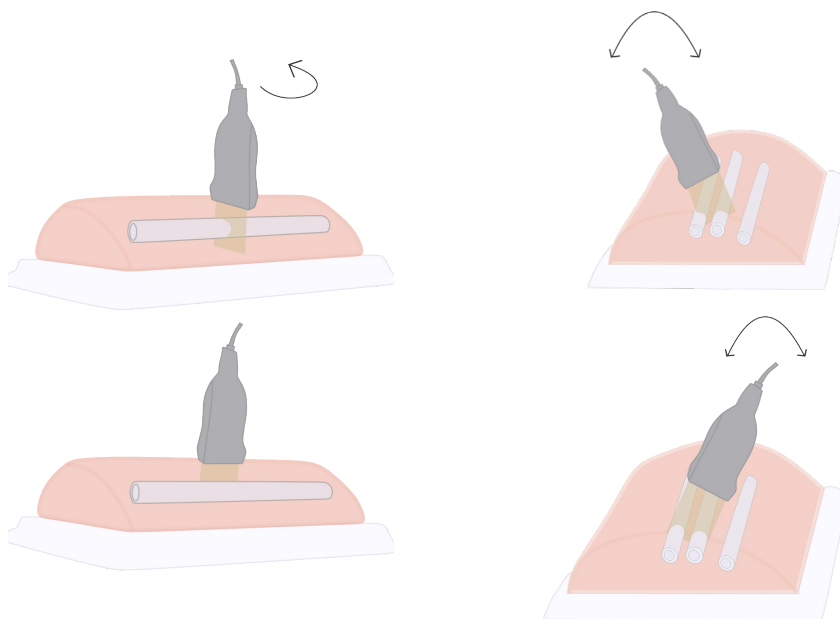


B-mode ultrasound images of the model.



Ultrasound scanning

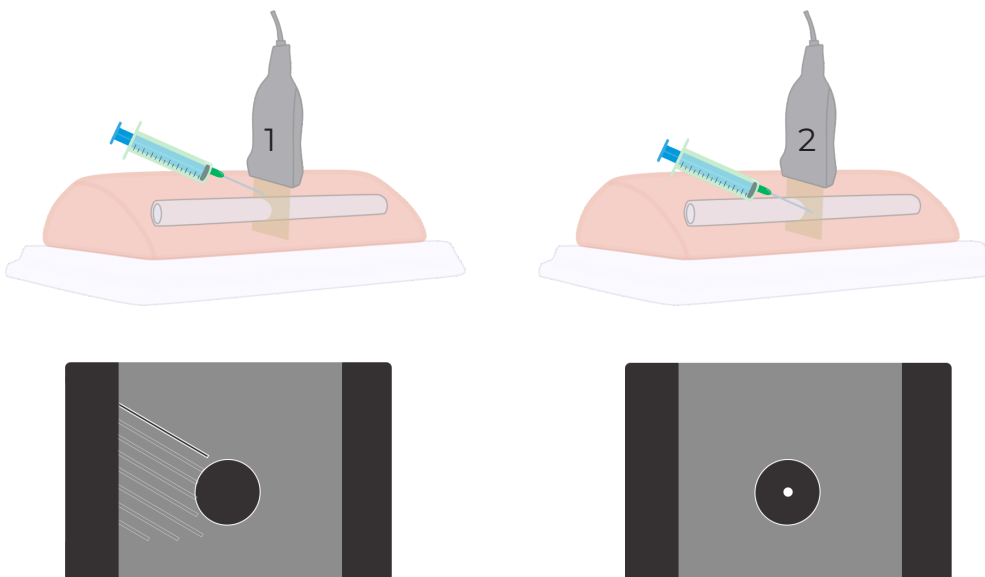
- Position the model correctly to use ultrasound on it;
- Apply a small layer of contact gel to the product or the transducer, in an amount sufficient to slide the transducer easily across the model. Add more gel if necessary;
- Adjust the ultrasound control system according to your protocol;
- Position the image according to your need;
- The structures are imaged in different planes, depending on the positioning and angle of the transducer in relation to the tissue. Optimizing a B-Mode image depends on several factors, such as equipment adjustments and transducer positioning. Therefore, it is important to understand the relationship between the ultrasound image plane and the morphology of the imaged tissue. For more information, return to our online ebook presented at the beginning of this manual;
- The correct positioning of the transducer, which allows obtaining precise images with optimized brightness, occurs with the probe in a perpendicular position to the tissue. When the transducer is tilted, forming an angle less than 90° with the tissue surface, the image brightness reduces and the representation of the structure is distorted.





Needling

- For best needle mark recovery results, we recommend using needles up to 23G. However, it is possible to use Gphantom for Core-Biopsy training, taking advantage of the length of the training block models. Even though the use of larger gauge needles reduces the useful life of the Gphantoms, our needle mark recovery technology continues to work on the models, ensuring good durability.
1. IN PLANE
 - In the in-plane approach, the entire length of the needle is visualized, in a longitudinal view. It is possible to obtain a continuous visualization of the trajectory of the needle and its tip.
 2. OUT OF PLAN
 - In the out-of-plane approach, the needle is inserted orthogonally to the imaging plane, obtaining a transverse image of the position of its tip, which is visualized as a bright point.





Handling and Maintenance

- Only perform the procedures supported by each product as described in this guide;
- Only use needles to access fluids;
- Do not use or store other sharp objects, such as scissors, scalpels or box cutters, next to your Gphantom;
- Do not insert any objects or tools into the model except medical equipment, accessories, or supplies intended for use with this model;
- Do not use chemical solvents on models;
- Always store your product in its packaging and in a cool place, away from the sun;

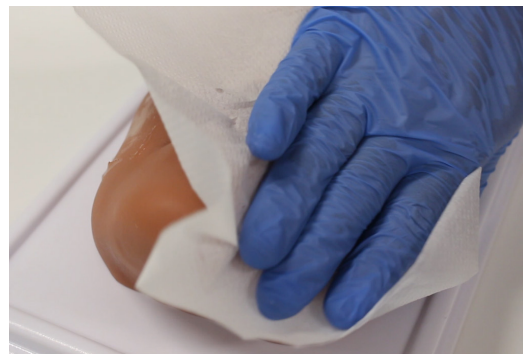


- Exposing your Gphantom to temperatures above 30°C for long periods may cause changes in the product's properties. After training, clean the product with a paper towel, removing excess ultrasound gel, and then wash it under running water, without removing it from the base;
- Do not store Gphantom with excess gel, as this may cause the proliferation of microorganisms that could damage the product;
- Do not use detergents or sponges, as these will damage the product!



Cleaning

- Clean the training model only with water and a light soap solution, if necessary, wash under running water. Do not submerge the model or use large amounts of liquid to wash it;
- Do not remove the product from the original base.



Storage and Transport

- Always store the product in a cool place, away from the sun;
- Transport the product in its packaging;
- Make sure there is nothing inside the packaging that could damage your product.



CONTACT



http://

www.gphantom.com.br



contato@gphantom.com.br



(16)99848-2468



Gphantom



@gphantomtm



Gphantom

Consult the feasibility of custom development
of a Gphantom product for your needs.

Gphantoms have a 3-month warranty against manufacturing defects from the issuance of the invoice.